

## Key Features

- One coat application. It chemically bonds to mineral building surfaces, penetrating up to 17mm to create an invisible insulation barrier.
- Dries clear, it does not alter the appearance of the building
- For use on a range of substrates including brick, stone, concrete and sandstone

## Quality Standards

UKAS tested & certified. Please see website for further details.

ETAG 034:2012 25 year Hygrothermal performance,  
ETAG 004:2011 External Thermal Insulation Composite System  
BS EN ISO 7783 2011 High Breathability  
BS EN ISO 12572 Water Vapour Resistance  
EN ISO 15148:2002 Hygrothermal Performance  
EN 15824 :2009 Water absorption, water vapour permeability, tensile strength, thermal conductivity and long term durability



**25 year proven  
performance**



**Find out more from our specialists:**

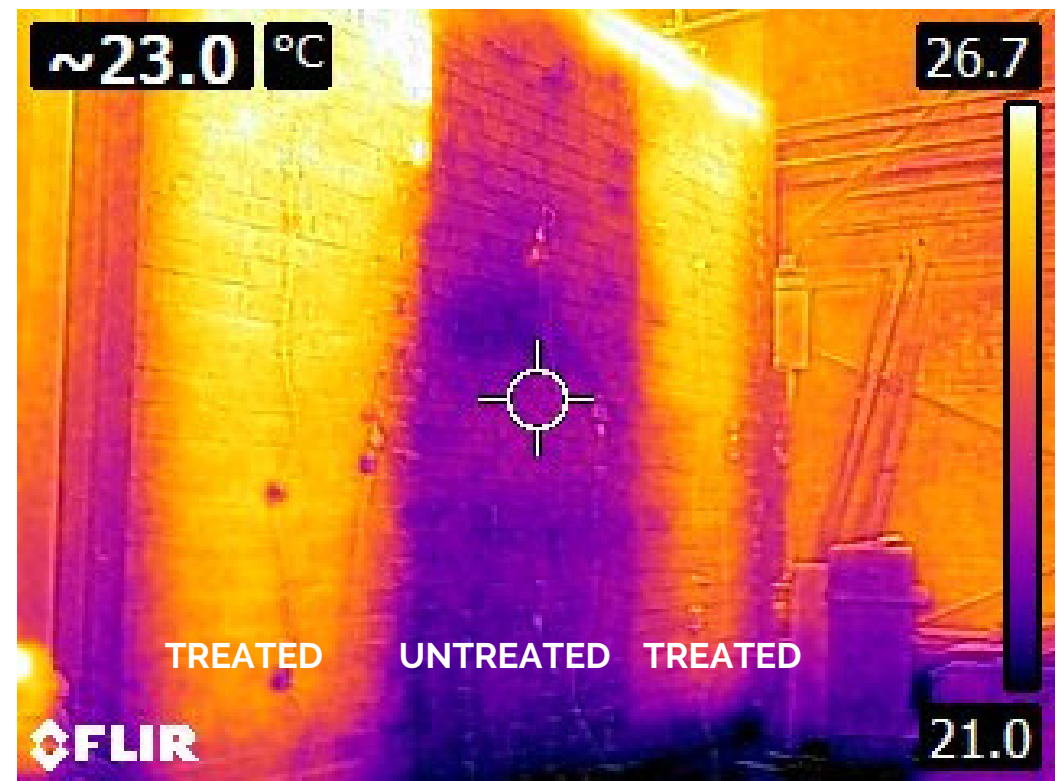
[www.properla.co.uk](http://www.properla.co.uk)

Manufactured in Germany under license for BECO TREAT ApS - Nebelvej 15 - 8700 Horsens

**PROPERLA® MASONRY CRÈME**  
SUPER HYDROPHOBIC COATINGS

# Improve energy efficiency

Keep the weather out & the warmth in



**25 Year Proven Performance**



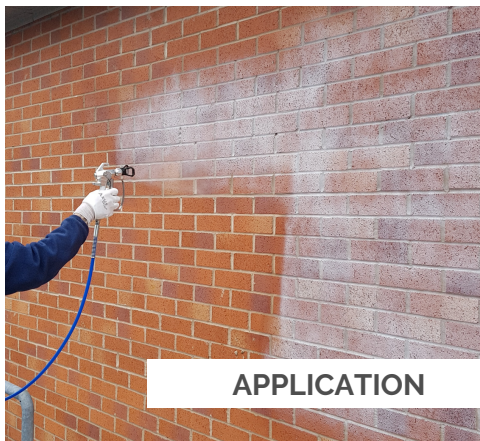
## Keep the weather out & the warmth in

A dry house is a warm house. When the walls of your home get wet from wind driven rain, it decreases the thermal resistance of the walls and can result in increased heat loss, contributing to higher energy bills. Water acts as a thermal bridge causing heat to transfer away from the property, reducing the energy efficiency of your home.

ProPERLA Masonry Crème is a highly water repellent wall coating which improves energy efficiency by keeping walls dry. When rain comes into contact with coated walls, the water forms droplets that simply run off the surface, reducing the water absorption of the walls by up to 96.3%.



Independent tests have demonstrated that brickwork treated with ProPERLA were significantly more energy efficient than untreated ones. The thermal image on the front, was taken during independent scientific testing and shows a 6°C difference in temperature between sections of the wall treated with ProPERLA and the untreated centre section.



APPLICATION



AFTER TREATMENT



## Protect

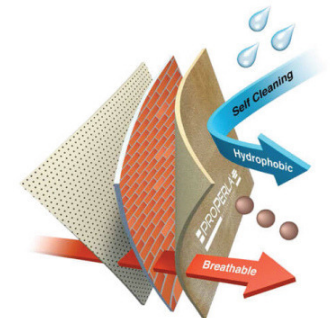
Moisture in the walls of your home can not only cause heat loss it can cause a host of problems for your house, your health and your pocket too. By keeping your walls dry, you can help to prevent;

- Penetrating damp
- Structural damage caused by sulphate attack
- Cracking caused by frost
- Accelerated decay of building materials

Protect your home from the damaging effects of the weather and give yourself peace of mind.

## Highly Breathable

ProPERLA Masonry Crème does not restrict the ability of your home to breathe. Independent testing (BS EN ISO 7783:2011) demonstrated the coating had little effect on air and moisture escaping. Unlike some stone and brick sealing products, it does not block the pores of the masonry by coating them with a thin film.



## Self-cleaning

Treated masonry remains clean and attractive -dirt is washed away with rainfall. The lack of moisture in the walls helps to deter the growth of unsightly moss, algae or lichens.